

SAFE AUTO-NEEDLES

SAN[®] PRODUCT FAMILY

Better injectors. Better compliance. Better care.

Addressing patient-centered challenges
in injectable drug delivery

Compatible with

- Prefilled syringes
(luer and staked needle)
- Vials
- Glass or polymer
- Liquid, lyo, powdered drugs



About DALI Medical Devices

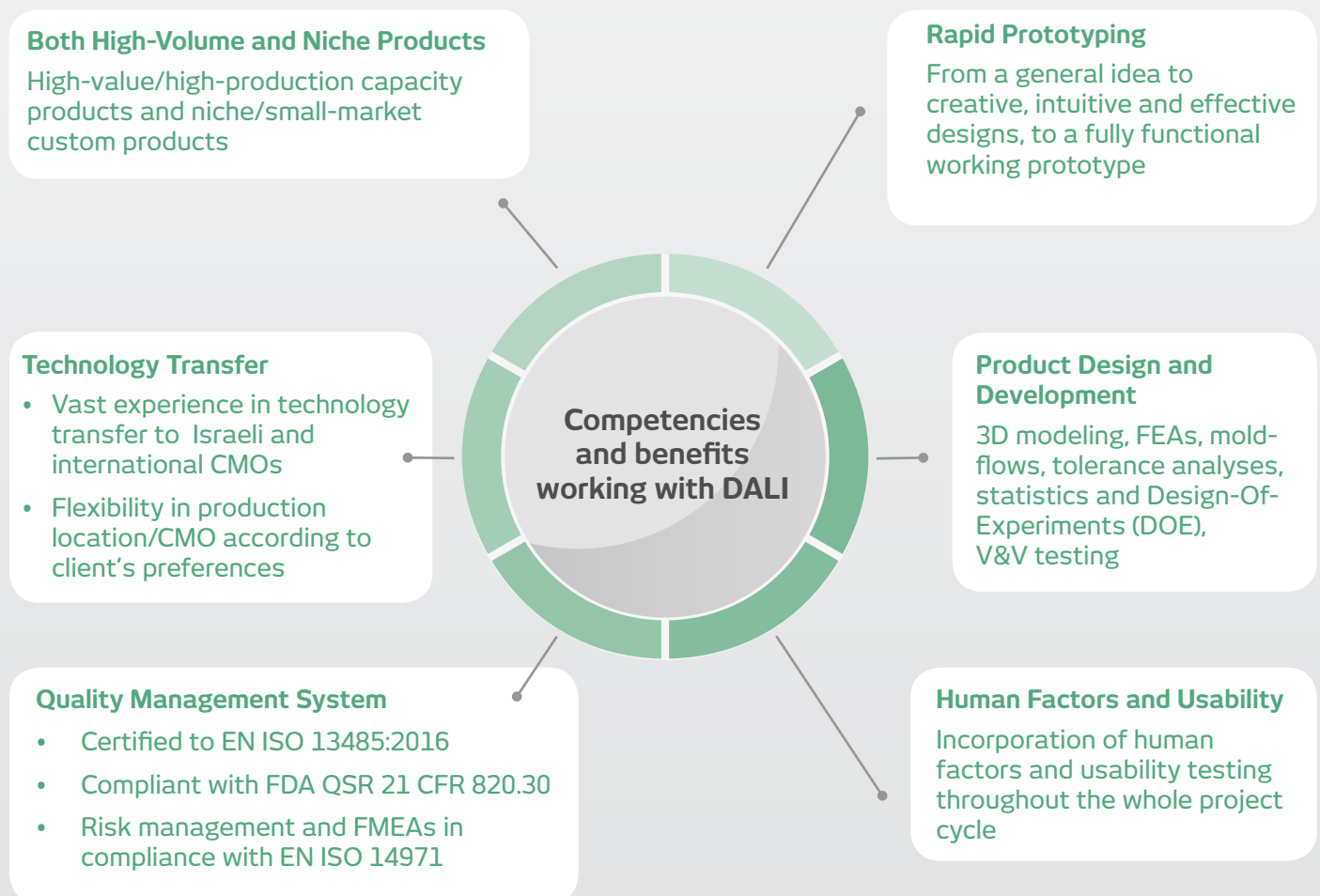
DALI Medical Devices develops drug delivery technologies and devices from product concept to commercialization for pharmaceutical and medical device companies, physicians, hospitals and patients.

One of the autoinjectors we invented and developed was launched in the market by a Top 10 pharma company.

We develop and customize products to meet specific end-user and high-volume manufacturing requirements. Our devices offer a value-added method to deliver and differentiate injectable drugs, but do not require drug manufacturers to alter their products or primary containers. For patients, our injectors reduce the perception of pain, lessen anxiety and improve adherence to treatment plans.

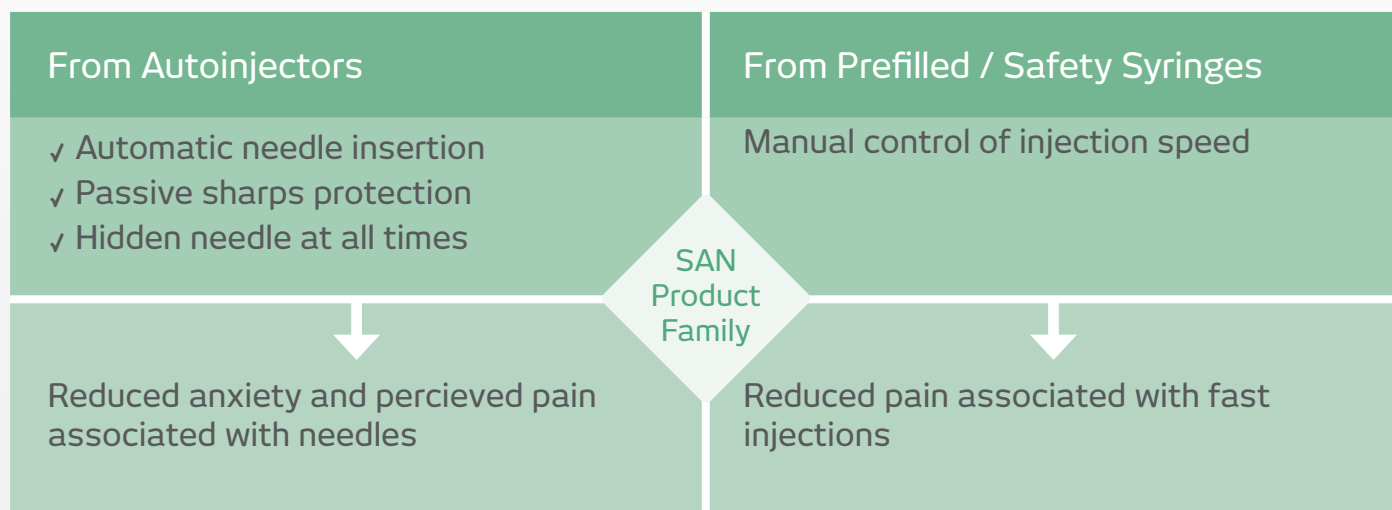
We have been active in the drug delivery arena for over 20 years. Our team of professionals specializes in plastics design and development, molding and testing - and has the ability to take medical and drug delivery devices from concept to registration and sales.

We tailor our devices to meet your specific needs or design a custom product.



To minimize injection-related pain, a significant percentage of patients prefer to control injection speed while also benefiting from the features of autoinjectors.*

DALI's Safe Auto-Needle products offer a unique combination of features both from autoinjectors and prefilled/safety syringes:



*Based on market research by DALI Medical Devices, presented at the Management Forum's Injectable Drug Delivery Conference, March 2015

What our clients say

"One thing that jumps out of the design review is that in general, clever and novel design approaches are evident throughout the product... The product uses the minimum number of components to achieve the desired functionality, without undue component complexity... "

J.C., Founder of a major US-based engineering firm (performing technical due-diligence for a major pharma client, for one of our autoinjector designs).

"DALI's staff is experienced and highly responsive. They adapt to changes with composure and professionalism. The latter are very important for any customized development. ... When the need arise, we would very likely request another development project from DALI."

E.D., Innovative Formulations Project Coordinator, generic pharma client

"The products/prototypes we receive from DALI exceed my expectations. ... DALI's technical and engineering support regarding new/customized products, project handling and corrective actions is excellent...."

T.S. , Senior Director, Marketing & Business Development, medical device client

"Regarding the new prototype of the autoinjector, all of the people I have shown the device to have been really pleased with the outcome. As always, you have provided an exceptional amount of quality with your work. Thank you for all of your efforts."

C.B., PhD, Senior Biologic Project Manager, R&D, major U.S. pharma company

"DALI is a trustworthy partner to work with on development of new products. Staff is well trained and experienced and can successfully support the pharmaceutical business requirements... "

A.P., Direct Procurement Manager, EU generic pharma client

Contact

David Daily, MSc, MBA

CEO & Co-Founder

ddaily@dalimed.com | T. +972-8-3730080 | www.dalimed.com

SAN[®]L

for any type of luer syringe

SAN-L benefits

- Compatible with any luer syringe
- Automatically inserts needle with an audible click
- Keeps needle hidden to reduce anxiety
- Allows patient to control injection speed
- Automatic (passive) needle shielding
- Customizable to drug manufacturer requirements



1: Connect



Connect the SAN-L to a standard luer syringe filled with ready-to-inject drug and remove cap

2: Insert needle



Push the SAN-L against skin until there is an audible click. Needle is automatically inserted

3: Inject



Press the syringe plunger to manually inject the drug at the most comfortable speed

4: Discard



Remove from skin and discard properly

SAN[®]P

for staked-needle prefilled syringes

SAN-P benefits

- Automatically inserts needle with an audible click
- Keeps needle hidden to reduce anxiety
- Allows patient to control injection speed
- Automatic (passive) needle shielding
- Large viewing window to verify drug clarity and integrity of prefilled syringe
- Customizable (multiple prefilled syringe sizes and drug manufacturer requirements)



1: Open



Remove cap

2: Insert needle



Push the SAN-P against skin until there is an audible click. Needle is automatically inserted

3: Inject



Press the syringe plunger to manually inject the drug at the most comfortable speed

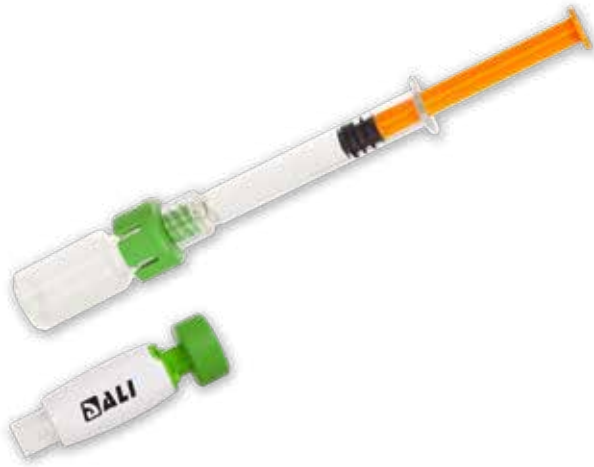
4: Discard



Remove from skin and discard properly

SAN[®]DV

for drugs in vials



SAN[®]DV Pro

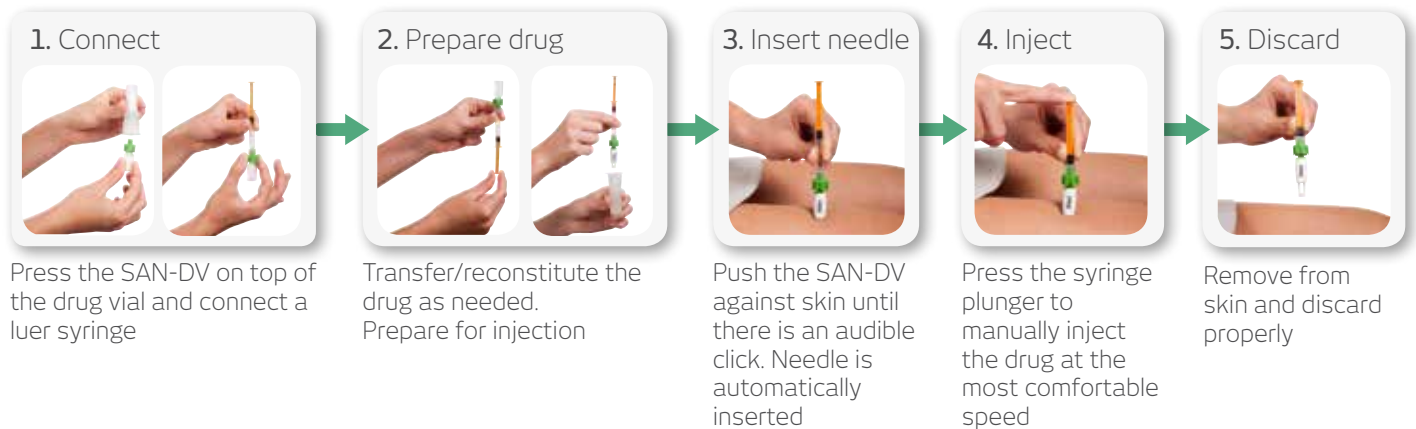
with integrated transfer system for drugs in vials



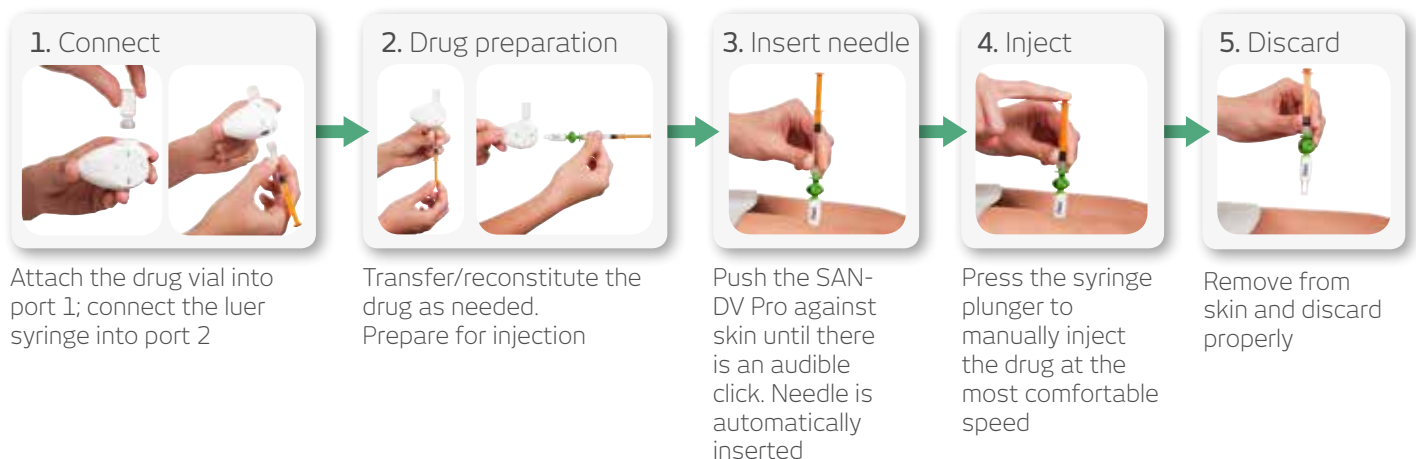
SAN-DV & SAN-DV Pro benefits

- Integrated vial adaptor and mixing system for easy reconstitution of lyophilized drugs
- Compatible with different vial sizes (13 mm and 20 mm neck) and with luer-lock prefilled syringes
- Automatically inserts needle with an audible click
- Keeps needle hidden to reduce anxiety
- Allows patient to control injection speed
- Automatic (passive) needle shielding
- Customizable to drug manufacturer requirements

SAN-DV



SAN-DV Pro



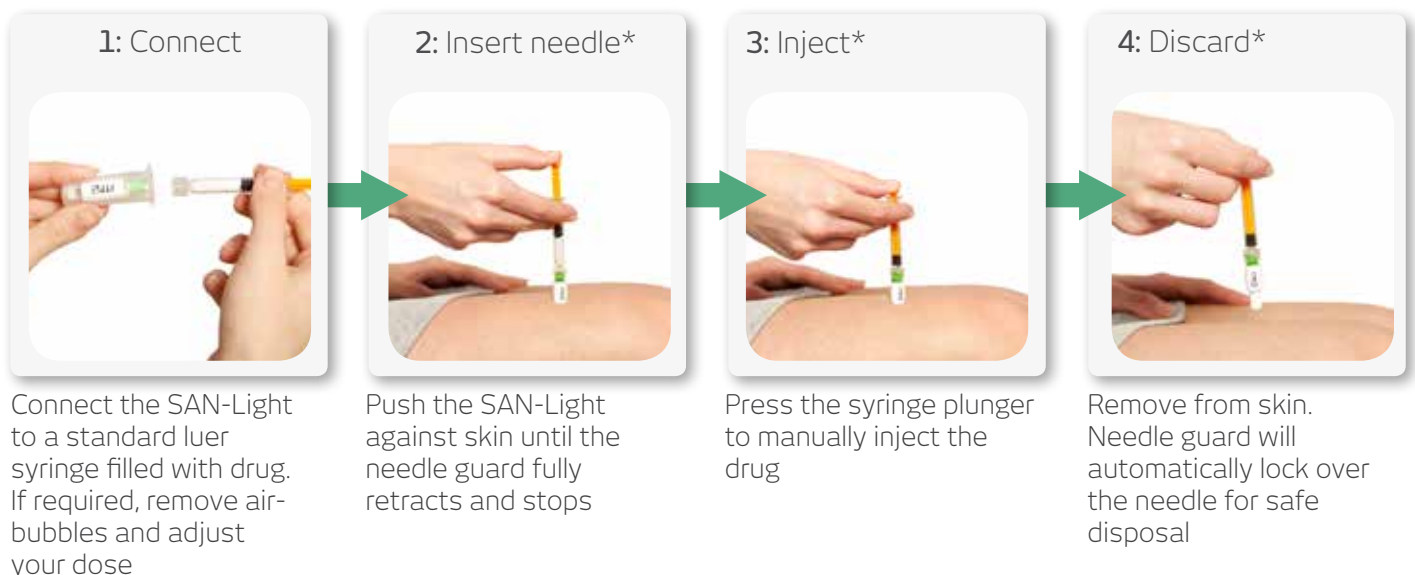
SAN[®]Light

Premium safety needles with passive needle protection for any type of luer syringe

The SAN-Light is a premium passive automatic safety needle, designed for use by healthcare professionals and self-injecting patients, to help prevent needlestick injuries.

SAN-Light benefits

- Compatible with any type of luer/luer-lock syringe
- Automatic (passive) needle shielding reduces needlestick injuries
- Partially hidden needle prior to injection reduces patients' anxiety
- Exposed needle tip helps to prime and orient injector
- Customizable to meet drug manufacturer requirements (e.g., needle gauge and length for SC, IM, or ID injection)
- No change to common injection practice



*Steps 2-4 are shown for self-injection. Healthcare professionals and caregivers may follow standard injection techniques when using SAN-Light for injecting patients or family members.

The SAN-Light can be incorporated in simplified versions of SAN-DV and SAN-DV Pro for use with drugs in vials.



SAN[®]In

Safety needle for integration with prefilled syringes

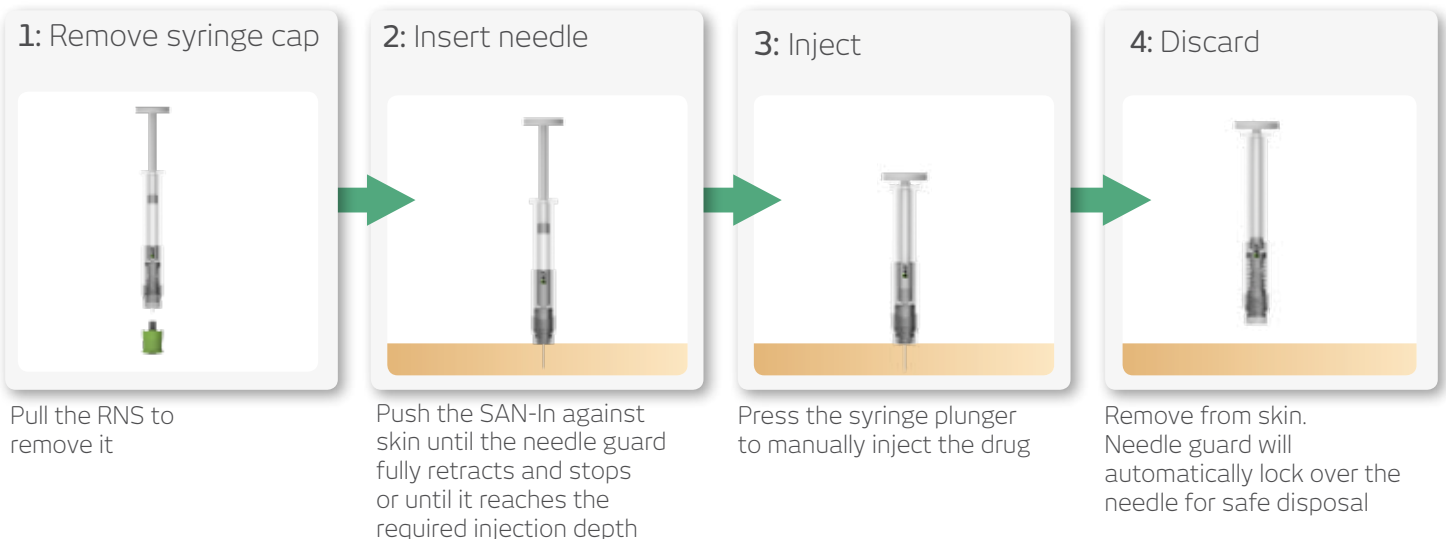
SAN-In benefits for the pharma company

- For integration with COP/COC prefillable syringes
- Syringes delivered with the SAN-In safety needles in a nest and tub configuration, sterilized by EO or Gamma and ready for filling on existing lines
- Proprietary safety mechanism prevents activation prior to RNS removal
- Requires small blister unit pack after filling
- Customizable (e.g., needle gauge and length)



SAN-In benefits for the user - patient, HCP or caregiver

- Automatic (passive) needle shielding, unrelated to pushing plunger-rod all the way in or not to reduce needlestick injuries
- Needle guard mechanism is inaccessible; lock is internal and cannot be easily reached
- RNS ergonomic external shape is easy to grasp with intuitive pull for removal
- Needle bending is impossible during RNS removal
- Partially exposed needle tip helps to prime and orient syringe against skin (requested by HCPs)
Partially hidden needle prior to injection reduces patient anxiety
- Plunger-stopper position clearly visible at end of injection
- No change to common HCPs injection practice



OPTIONAL DALI's proprietary Finger-Grip & Sleeve eliminates fingers interference with needle shield movement during needle insertion.



DALI's "DeviceBetter" approach for Drug Delivery Devices

DALI Medical Devices brings over 20 years of experience in the development of innovative drug delivery devices. Our rigorous approach and procedures for design, engineering and project management enable us to not only develop exciting products but also to ensure they meet the users' needs and comply with all relevant standards and regulations.

We always strive to develop a BETTER device for

- better usability,
- more intuitive and easier use, and
- one that users want to use.

"DeviceBetter" provides a competitive advantage for generics/biosimilars as well as for innovative pharma companies.

Contact us to discuss how we can tailor our devices to meet your specific needs or design a custom product that meets your particular requirements.

Selected project examples and case studies

Autoinjector in the Market

One of the autoinjectors we invented and developed was launched in the market by a major pharma company. Other disposable and reusable autoinjectors are in development for other pharma clients.

From Feasibility Project to Supply Agreement

4-5 month feasibility project of custom versions of two SAN products included rapid production of fully functional prototypes, formative usability/human factors study and bench testing. Successful completion led to supply agreement.

DALI Is the Legal Manufacturer and CE Mark Holder

One SAN product is customized for an EU pharma company for a generic drug to treat endocrine diseases. Technical File submitted for regulatory agencies.

Our extensive relationship with E3D (Elcam Drug Delivery Devices) covers a variety of new-generation autoinjectors for self-administration. See the Flexi-Q range of autoinjectors at www.elcam3D.com.



* The SAN product line is under development



DALI Medical Devices LTD
6 Nahal Harif St., P.O. Box 13223, Yavne 8122503, Israel
Tel: +972-8-3730080 | E-mail: info@dalimed.com
www.dalimed.com

